

Graduate education and the master's degree

An update on graduate
enrollment, degrees, and the
future

Peter Syverson

Vice President for Research

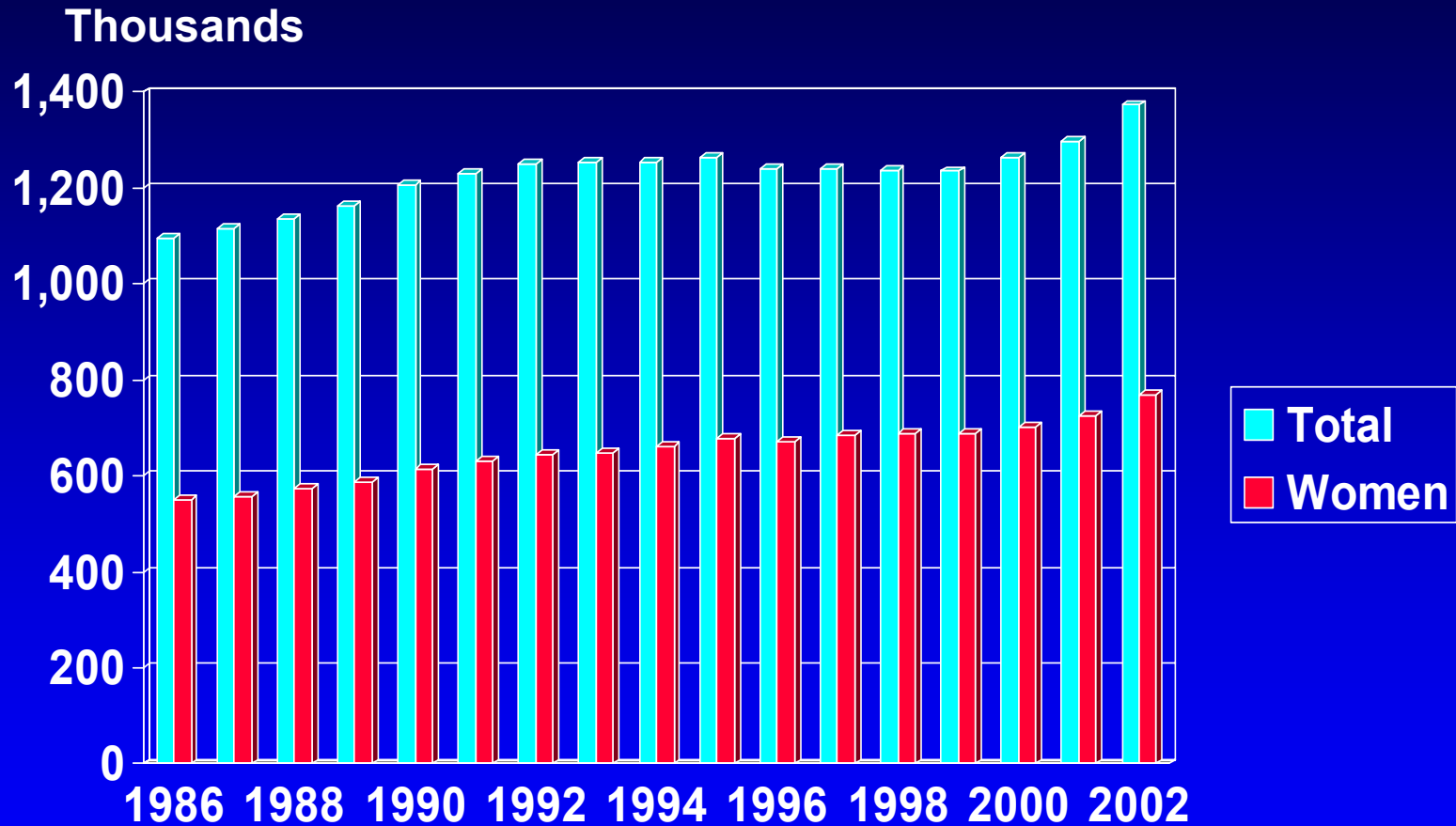
Council of Graduate Schools

www.cgsnet.org

Dimensions of the enterprise

- 1,700 institutions
- 1.9 million students
- ½ million degrees annually
 - 460,000 master's degrees
 - 41,000 doctoral degrees
- CGS institutions enroll 2/3 of students, grant 75% of master's degrees, and nearly all doctorate degrees.

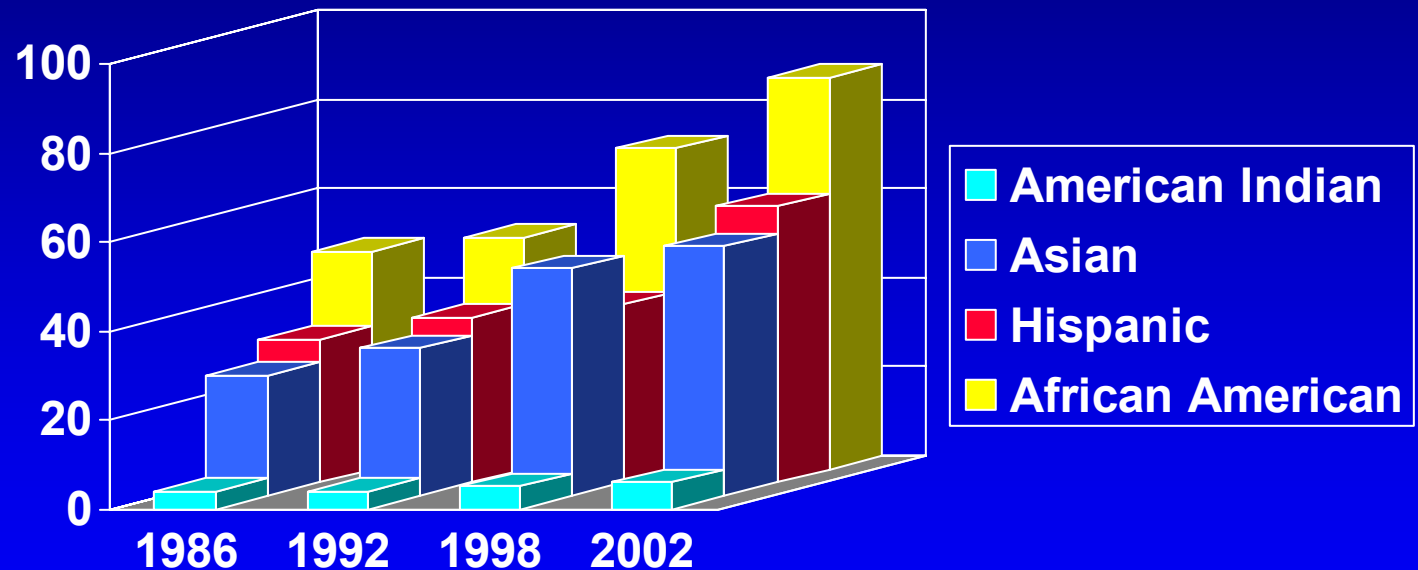
Graduate enrollment trends



Source: CGS/GRE Survey of Graduate Enrollment

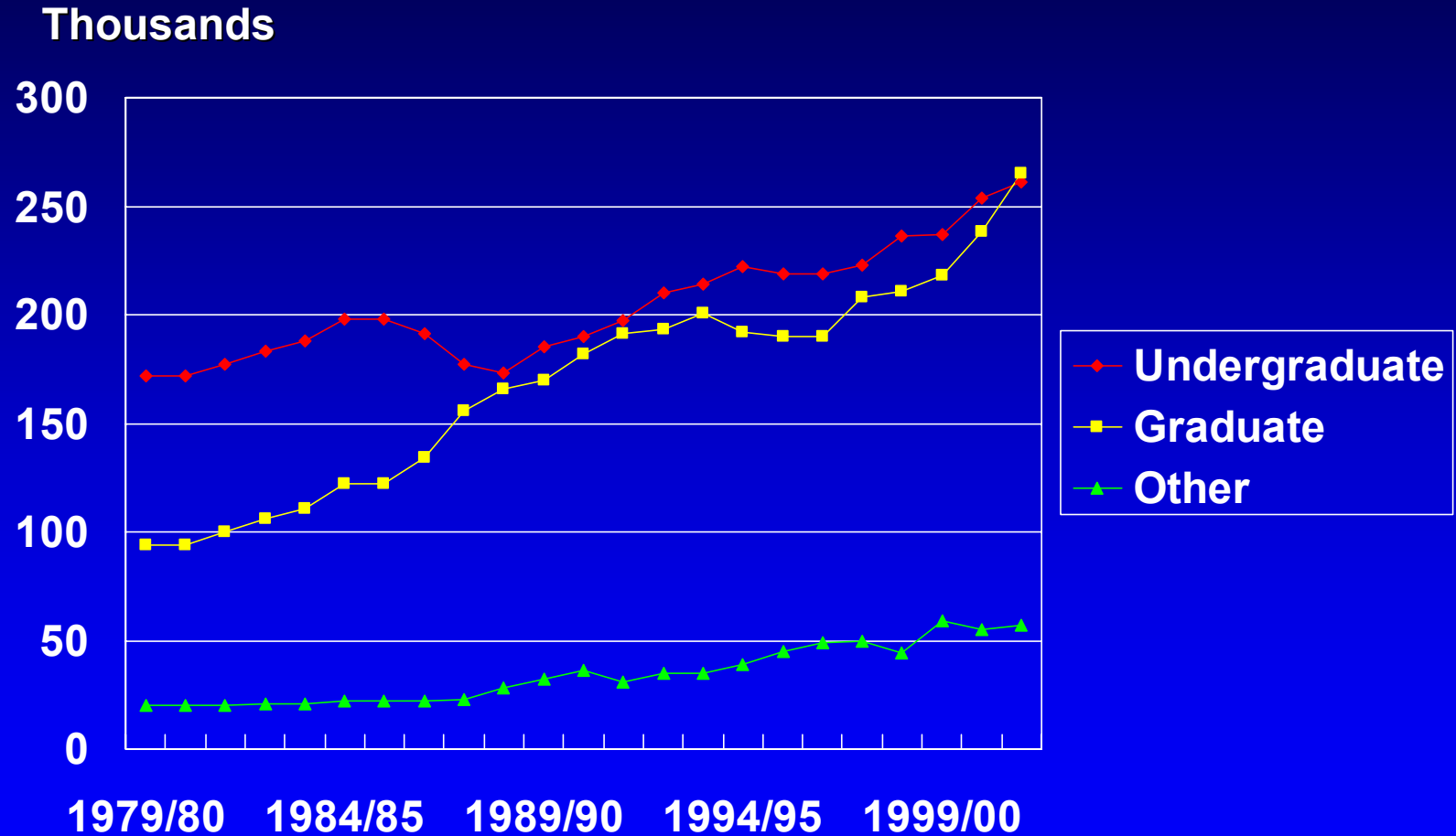
Graduate enrollment by ethnicity

Thousands



Source: CGS/GRE Survey of Graduate Enrollment

International student enrollment



Source: IIE, Open Doors

Degree attainment

- Master's degrees
 - Growing by 4% each year
 - Education and business account for 1/2
 - Women earn 58% of all master's degrees
- Doctoral degrees
 - Decreased 4% from 1998 peak
 - Representation of women rising, now at 44%
 - Most international grad students are doctoral students; 24% overall, 38% in physical sciences, 50% in engineering

The New American Graduate Student

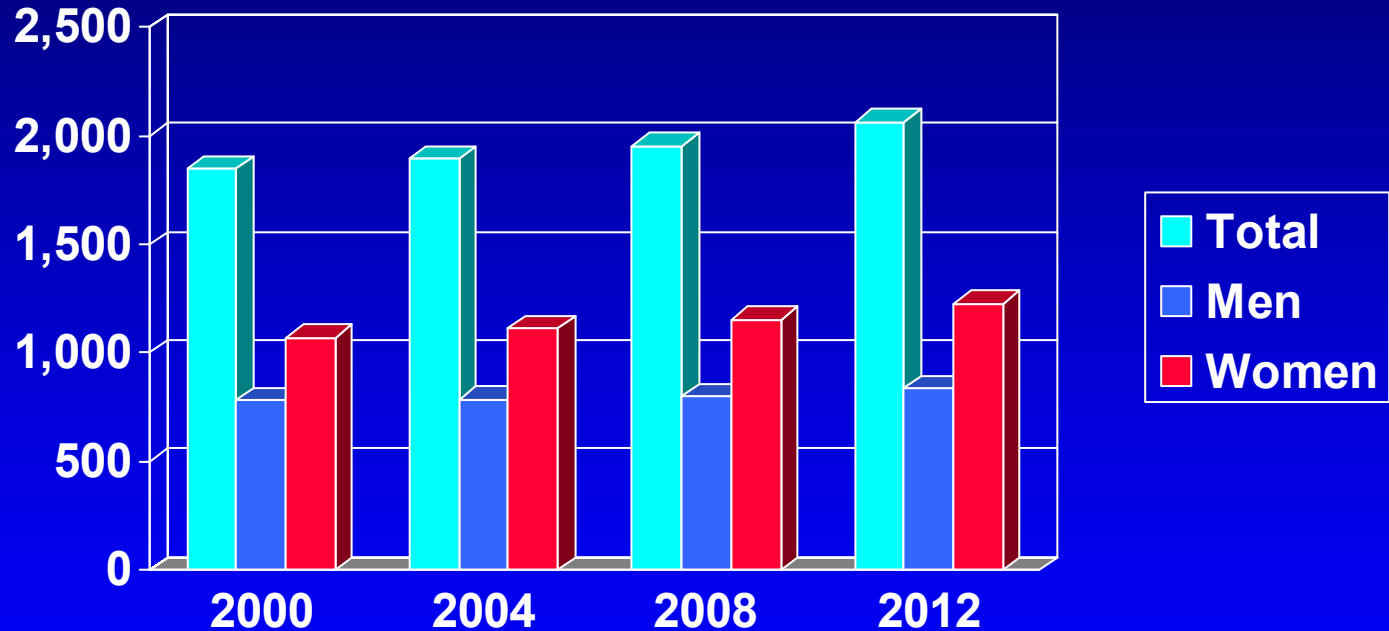
- 80% master's students
- 56% female
- 20% underrepresented
- 49% part-time
- 16% international
- Average age is 33, 23% are over 40
- 53% married, 35% have children
- More than $\frac{3}{4}$ work while in grad school
- $\frac{1}{2}$ have education-related debt, MA \$25K, Ph.D \$36K

Anticipating the future - expectations versus reality

- 75% of college freshmen expect to earn a graduate or 1st professional degree
- In first 5 years after college graduation –
 - 39% had taken a graduate admissions exam
 - 41% had applied for admission
 - 35% had been accepted into at least 1 program
 - 30% had enrolled in a graduate or 1st professional program

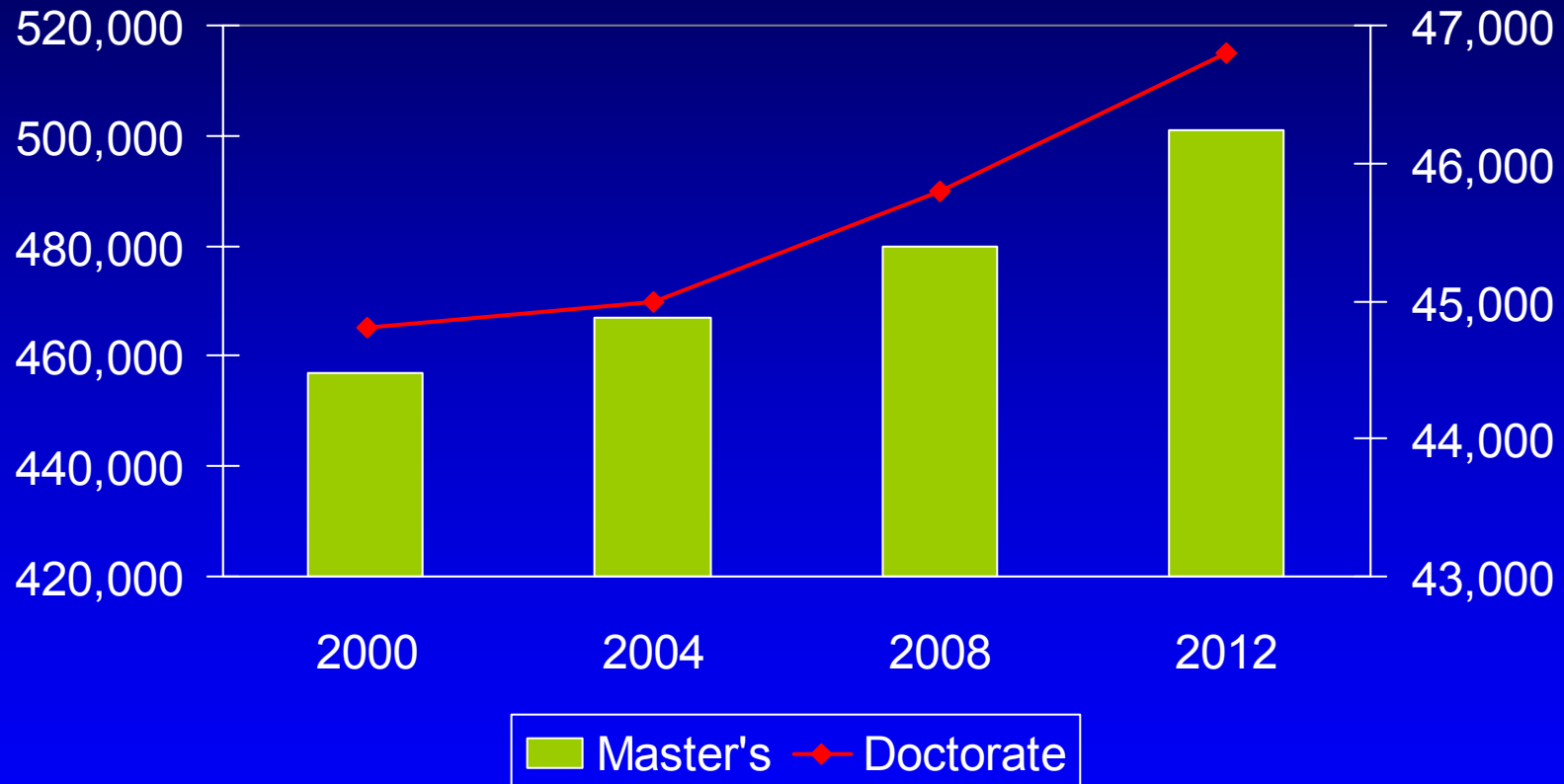
Projections: graduate enrollment

Thousands



Source: NCES, Projections to 2012

Projections: graduate degrees



Source: NCES, Projections to 2012

CGS master's degree initiatives

- Sloan PSM at master's-focused institutions
 - 36 institutions received planning grants
 - Implementation grants to 9 institutions for 17 new PSM programs
 - Second round underway
- Ford PSSHM program
 - Up to 60 planning grants across the social sciences and humanities

Summary

- Graduate education is growing in response to softening economy and employer demand for higher levels of education.
- Graduate student populations becoming increasingly diverse by gender and ethnicity.
- New American Graduate Student both a challenge and opportunity for graduate schools.
- Demographic change + employer demand = future growth